



www.YourFamilyHistoryProject.com

Family History Research • DNA Analysis • Live Presentations & Lectures

Janet Hall Werner, J.D.

### The Adoption Case of Amy G.

Presented Via Zoom

by Janet Hall Werner, J.D.

To

The Baltimore Genealogy Society

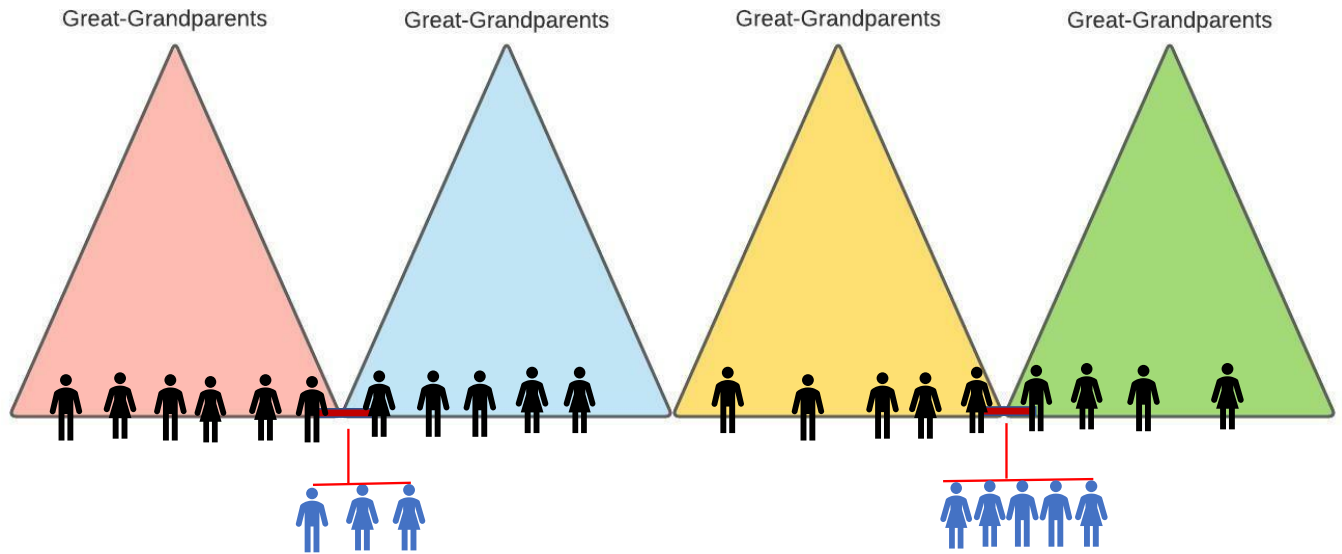
Oct. 23, 2022

#### Steps for Solving an Adoption with a Close Match

- Determine strength of match in centimorgans
- Use DNA Painter Shared cM Project to determine likely relationships -- <https://dnainter.com/tools/sharedcmv4>
- Determine age of Adoptee for best guess at generation
- Believe what you see
- Narrow potential parent of Adoptee down to a set of siblings (usually brothers) by finding matches with spouses of GRANDPARENT of Adoptee
- \*\*\* If you are working with someone YOU match, you will need to get more match data from the adoptee than you will be able to see on your own match list
- \*\*\*\*\* Adoptee should make contact – If you're helping someone, don't poke around unless you absolutely HAVE to, and then, only if you have it narrowed down to siblings

#### Solving a Hard Case

- Closest matches – 2<sup>nd</sup> Cousins (229), 2C1R (122), 3<sup>rd</sup> Cousins (73)
- Know the age of the Adoptee
- Start clustering the matches

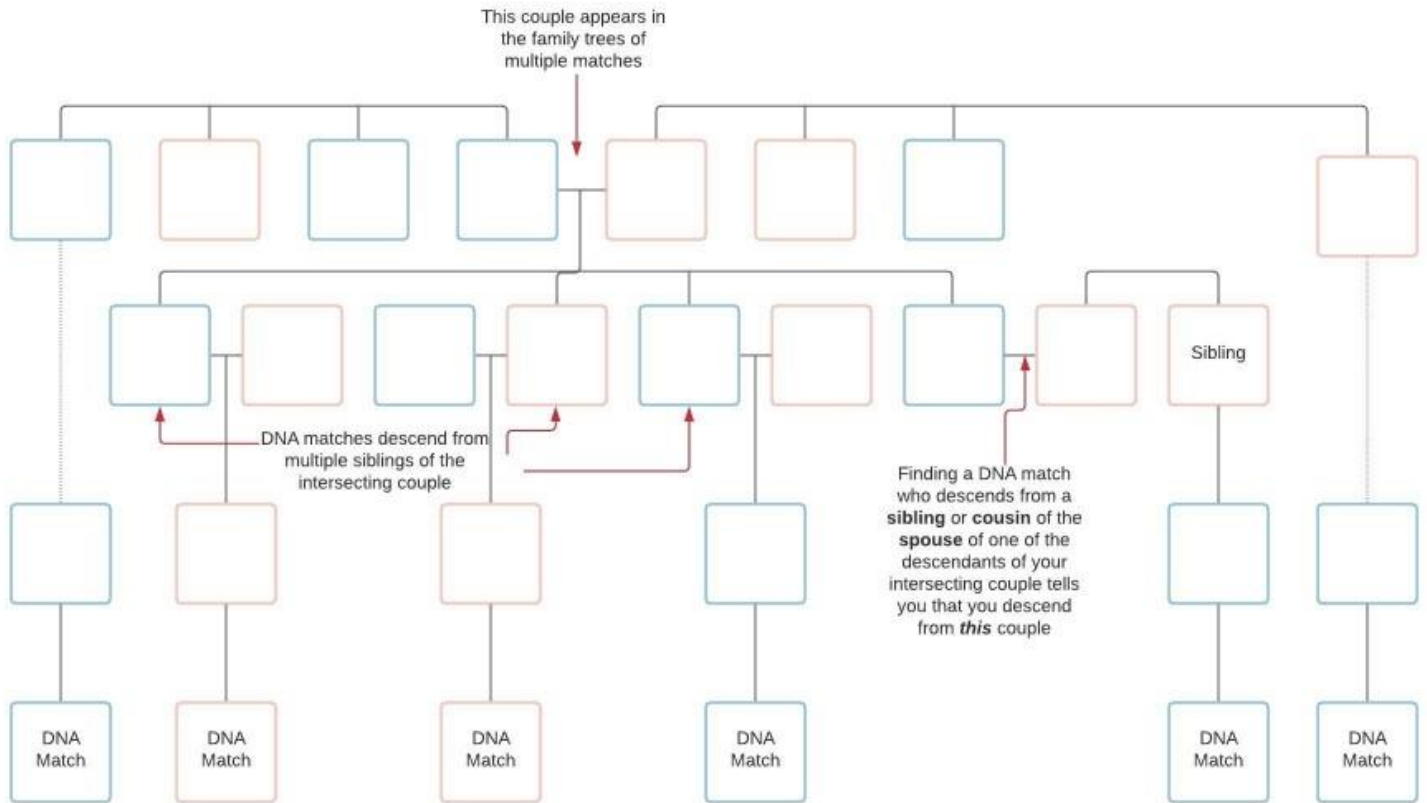


### Solving a Hard Adoption Case

- You're looking for the adoptee's grandparents, by finding the adoptee's great-grandparents
- Clustering the matches
- Look through the trees of the matches of your strongest match (even if the strongest match doesn't have a tree)
- Look for common surnames and start to build trees for your matches
- Find the "intersecting couple" who should be the adoptee's great-grandparents

### Intersecting Couples

- If you find a couple in multiple matches' trees where the adoptee's matches descend from different siblings of the couple, it is an indication that the adoptee descends from that couple as well



Copyright 2020. By Janet Hall Werner. All rights reserved.  
Do not copy or photograph without permission.

### Solving a Hard Adoption Case

- Start clustering the matches
- Start with the strongest match
- Repeat with the next strongest cluster
- Repeat with the next strongest cluster
- Repeat again – ideally you'll have 4 clusters
- Find the child of the great-grandparents who married a child of another set of great-grandparents
- Those are two of the adoptee's grandparents – one of their children is the adoptee's parent
- Repeat for the other two sets of great-grandparents to find the other parent of the adoptee

Questions?

Contact me at:

Email: [janetfamhist@gmail.com](mailto:janetfamhist@gmail.com)

Cell: 703-906-9901